
hotels

2016/2017



It's electric.
.....

English

**BACH
MANN**

”

*Our goal here at BACHMANN
is to be a trendsetter and to
bring innovations to life. We want
to improve quality of life with our
solutions – people should feel
at ease with our technology.*

Peter Bachmann | CEO

welcome



1 WIRELESS CHARGER PAGE 44

2 PIX PAGE 20



feel-good oasis



1 PIX PAGE 20

2 WIRELESS CHARGER PAGE 44



3 POWER FRAME COVER PAGE 26

4 DESK 2 PAGE 36

a flowing current



① DUE PAGE 24

② ELEVATOR PAGE 22



bon appétit





shaping the future




1 HD BASE T PAGE 40

2 CONI DUO PAGE 32







**The magic
is always
in the detail.**

Theodor Fontane (German author | 1819–1898)

contents

TWIST	PAGE 18
PIX	PAGE 20
ELEVATOR	PAGE 22
DUE	PAGE 24
POWER FRAME COVER	PAGE 26
POWER FRAME	PAGE 28
KAPSA	PAGE 30
CONI DUO	PAGE 32

CONI	PAGE 34
DESK 2	PAGE 36
DESK 1	PAGE 38
HD BASE T	PAGE 40
CUSTOM MODULES	PAGE 42
WIRELESS CHARGER	PAGE 44
POWER SUPPLY CABLES	PAGE 45
SERVICE & PICTOGRAMS	PAGE 46



TWIST

TWIST is the ideal power strip for kitchens and offices. With its compact form and low installation depth, it can be easily integrated into worktops. Because the power cable is routed close to the housing, the installation depth is only around 40 mm, meaning that the unit can be easily installed above a drawer.

Various surface versions allow TWIST to fit effortlessly into both classic and modern shape and colour concepts. An ingenious fastening mechanism: after use, simply rotate the cover and the socket outlets disappear underneath it.

BENEFITS

- **Just 40 mm installation depth**
- **Quick and easy to install**
- **Suitable for retrofitting**
- **KEMA-KEUR approved**

AWARDS





Dimensions (H x Ø)
42.5 x 115 mm





Installation depth
40 mm

Cover disc
material: Metal
Socket material: Plastic

Socket colour
Black

Colour variants



#				
Matt chrome Power input: 0.2m cable and GST18 plug				
931.001	1			2
931.003		1		2
931.009			1 (T13)	2
Black Power input: 0.2m cable and GST18 plug				
931.101	1			2
931.103		1		2
White Power input: 0.2m cable and GST18 plug				
931.201	1			2
931.203		1		2



Watch the TWIST
installation video at
bachmann.com



With an **installation depth of just 40 mm**, the TWIST is so compact that it is even possible to install it above a drawer.

#			
---	--	--	--

Stainless steel look | Power input: 2.0m cable with end sleeves and mounting plug, included

931.000	2		
931.002		2	
931.008			2 (T23)

Black | Power input: 2.0m cable with end sleeves and mounting plug, included

931.100	2		
931.102		2	

White | Power input: 2.0m cable with end sleeves and mounting plug, included

931.200	2		
931.202		2	



931.102

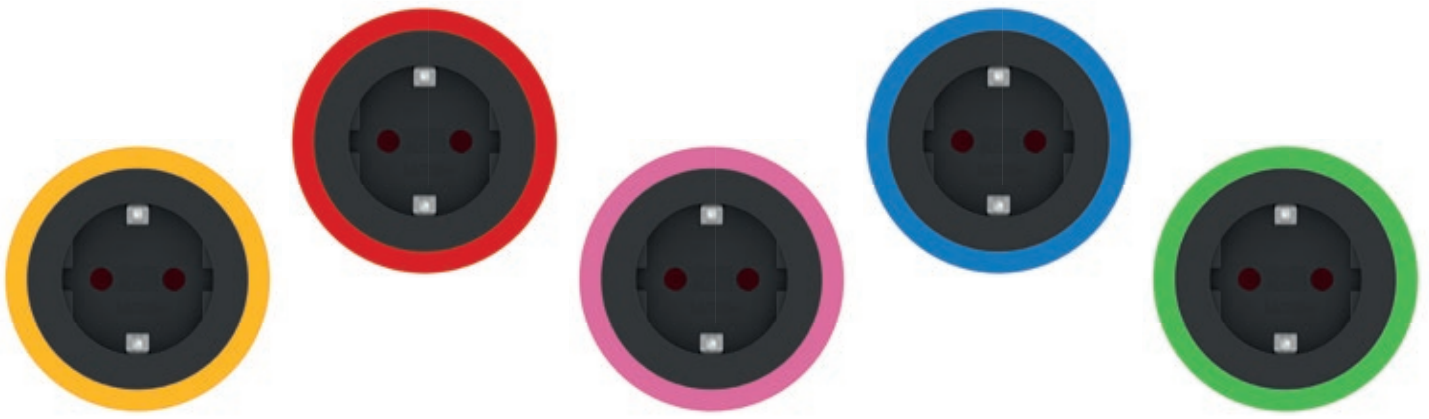


931.202



Hole saw | For installing the TWIST

931.900	In wood/plastic Cutting depth up to 44 mm Diameter 105 mm
918.900	Mounting tool for hole saw with centre drill



PIX

The stylish PIX range is a collection of sophisticated, round socket outlet and connector units that can be used in many different ways. On a desk in the office, in the kitchen, in the bathroom, as a lounge element, in the wall or other living room scenarios.

Used alone or in combination, the decorative rings are available in various colours and can be interchanged. With its round, flat shape and minimalist appearance, the PIX meets design requirements exactly where you need it.

BENEFITS

- Can be integrated on its own or in combination
- Interchangeable, coloured decorative rings
- With swivel-mounted cover as an option
- Simple mounting from above, retrofitting possible too
- Just 45 mm installation depth



Dimensions (H x Ø)

50 x 68 mm

Installation depth

45 mm

Material

Plastic

Socket colour

Black

Colour variants



#				
---	--	--	--	--

PIX power strip incl. 2 decorative rings (black and white)

Power input: 0.2 m cable and GST18 plug


926.000	1			
926.002		1		
926.004			1 (T13)	
926.006				1 (3.15 A)

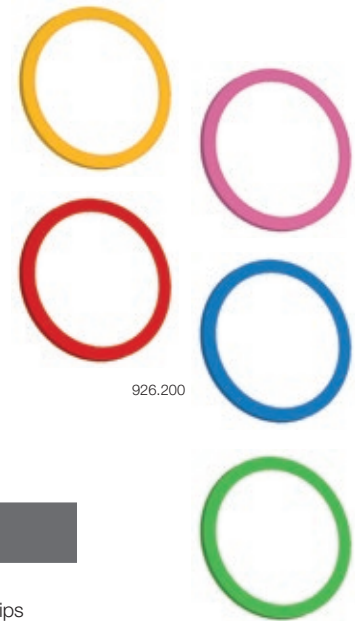
PIX power strip incl. 3 decorative rings (black, white and stainless steel look)

Power input: 2.0 m cable with end sleeves and mounting plug, included

926.001	1			
926.003		1		
926.005			1 (T13)	
926.007				1 (13 A)




PIX decorative rings
 available in **eight colour**
 variants.

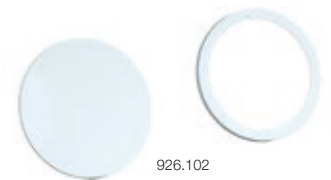


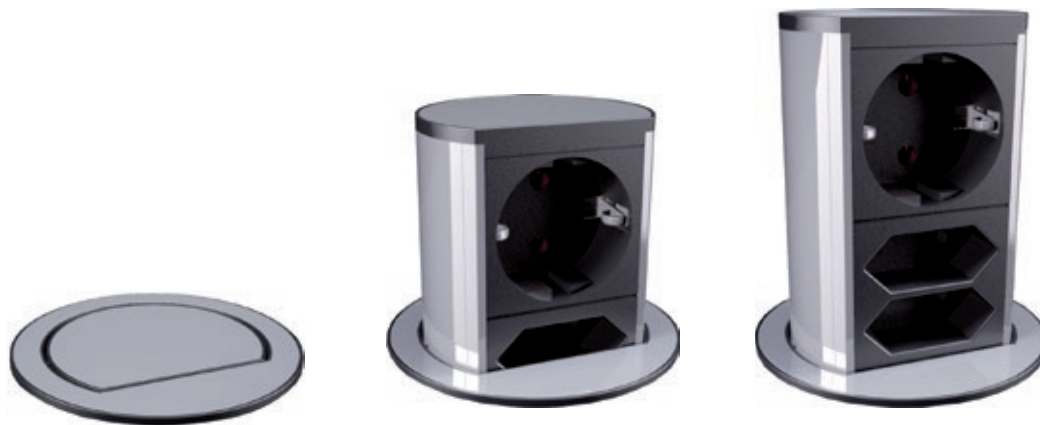
PIX classic decorative ring set | Colourful decorative ring set for interchanging on already present PIX power strips

926.200	1 x melon yellow (RAL1028) 1 x traffic red (RAL3020) 1 x yellow green (RAL6018) 1 x sky blue (RAL5015) 1 x heather violet (RAL4003)
---------	---

PIX cover set | Swivelling cover with colour-coordinated decorative ring incl. covers for all countries and connection versions

926.101	Cover set in black, similar to RAL9005
926.102	Cover set in white, similar to RAL9010





ELEVATOR

ELEVATOR fits perfectly in any working environment. At 79 mm in diameter, ELEVATOR is ideal for integrating power and data connections in tiny spaces. Simply press down with your finger to raise and lower ELEVATOR.

Installation is incredibly simple. ELEVATOR is placed in a cut-out 79 mm in diameter and secured to the desktop or tabletop from below using a lock ring.

BENEFITS

- **Press down with your finger to raise**
- **Quick and easy to install**
- **Suitable for retrofitting**
- **Suitable for standard 79 mm hole**



Dimensions (HxØ)
100x79 mm

Profile

material: Aluminium
Socket material: Plastic

Socket colour

Black

Colour variants



#							
Matt chrome Power input: 0.5m cable and GST18 plug, 3.0m data cables incl. plug/socket							
928.004	1				90°		2x CAT6
928.005	1				90°		1x CAT6 1x USB 3.0A
928.006	1				90°		1x CAT6 1x HDMI
928.008		1			90°		2x CAT6
928.009		1			90°		1x CAT6 1x USB 3.0A
928.010		1			90°		1x CAT6 1x HDMI
928.035			1 (T13)		90°		2x CAT6
928.039				1 (5 A)	90°		1x CAT6 1x USB 3.0A
928.026				1 (5 A)	90°	•	



 Watch the ELEVATOR installation video at bachmann.com







Simply press down with your finger to raise and lower ELEVATOR.

#							
---	---	---	---	---	---	---	---

Stainless steel look | Power input: 2.0 m cable with end sleeves and mounting plug, included

928.002	2					90°	
928.003	1				2	90°/0°	
928.007		2				90°	
928.024			2 (T23)			90°	
928.017	1					90°	•
928.020		1				90°	•
928.046				1 (13 A)		90°	•



Hole saw | For installing the ELEVATOR

928.900	In wood/plastic Cutting depth up to 44 mm Diameter 79 mm
918.900	Mounting tool for hole saw with centre drill





DUE


DUE is the ideal power strip for the kitchen. It guarantees an elegant power supply and can be used just as effectively in the office and in other areas.

With its interchangeable covers, it can be colour-coordinated to its surroundings or create accents as desired, even after installation.

The split cover allows DUE to be slid open as required, with a design that looks equally elegant when in use.

BENEFITS

- **Interchangeable covers available**
- **Space-saving even when open**
- **Supplied with installation template**
- **Just 45 mm installation depth**
- **Integrated water run-off**



Dimensions when open (W x H x D)
141 x 72 x 49 mm

Material
Plastic

Socket colour
Black

Colour variants

#				
---	---	---	---	---

DUE power strip | Power input: 0.2m cable and GST18 plug

929.010	2			90°
929.012		2		90°

DUE power strip | Power input: 2.0m cable with end sleeves and mounting plug, included

929.000	2			90°
929.002		2		90°
929.004			2 (13 A)	90°

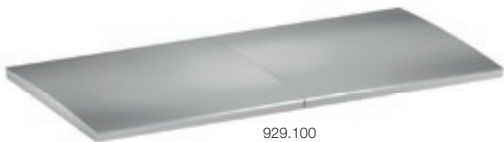


DUE cover

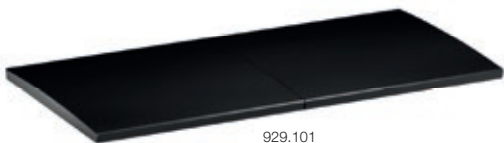
929.100	Stainless steel look
929.101	Painted black, similar to RAL9005
929.102	Painted white, similar to RAL9010



929.010



929.100



929.101



929.102

.....

Space-saving
even when open.





POWER FRAME COVER

POWER FRAME COVER is the elegant and compact power and data supply solution.

The POWER FRAME COVER has an attractive aluminium cover, designed especially for stylish room concepts, which also protects power and data connections from dust and dirt as a matter of course.

When the cover is fully open, both sides of the table or desk offer unimpeded access.

BENEFITS

- **High-quality design piece for work and living spaces**
- **Accessible from every seat**
- **Protection against dirt and dust**
- **Versatile: can be combined with socket outlets and data, audio and video modules**

AWARDS



Dimensions (W x H x D)
See table x 88 x 42 mm

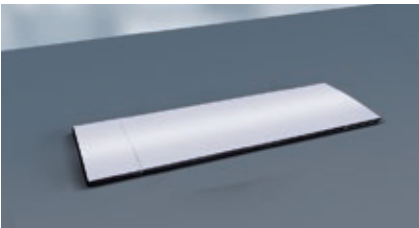
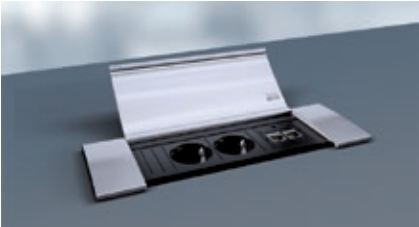
Material
Aluminium

Colour variants






 Accessible from
every seat.



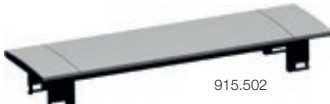
POWER FRAME COVER – Small | Width: 255 mm | Aluminium flap with fixed, integrated mounting frame, black (article no. 915.000) for sticking into the table

915.500	Anodised aluminium, E8/EV1
---------	----------------------------

915.503	Painted white, similar to RAL9010
---------	-----------------------------------

915.501	Painted stainless steel
---------	-------------------------

915.022	Anodised black E1/C35 and brushed
---------	-----------------------------------




POWER FRAME COVER – Medium | Width: 300mm | Aluminium flap with fixed, integrated mounting frame, black (article no. 915.004) for sticking into the table

915.502	Anodised aluminium, E8/EV1
---------	----------------------------

POWER FRAME COVER – Large | Width: 383 mm | Aluminium flap with fixed, integrated mounting frame, black (article no. 915.006) for sticking into the table

915.504	Anodised aluminium, E8/EV1
---------	----------------------------


 Only power strips with **evenly flush custom modules** can be used in conjunction with the POWER FRAME COVER.
 The **matching power strips** can be found on p. 28.



POWER FRAME

POWER FRAME is the compact solution for integrated and easily accessible power and data connections for workstations. It can be either factory-installed or supplied for retrofitting.

The power strip clicks into the mounting frame and can be interchanged or fitted with custom modules as required.

BENEFITS

- **Compact dimensions**
- **Suitable for retrofitting**
- **Timeless design**
- **Versatile in application**
- **Rapid installation of complete power strips**



Dimensions (W x H x D)
See table x 73 x 36 mm

Mounting frame
material: Sheet steel
Socket material:
Plastic, aluminium

Socket colour
Black

Colour variants



#							
---	--	--	--	--	--	--	--

POWER FRAME Power strip – Small | Power input: 0.2m cable and GST18 plug

916.0040	2				35°	•	
916.103		2			35°	•	
916.218			2 (T13)		0°	•	
916.100				2 (3.15 A)	90°	•	


POWER FRAME Power strip – Medium | Power input: 0.2m cable and GST18 plug

916.0514	2				35°	•	1
916.0411		2			35°	•	1
916.0511			2 (T13)		0°	•	1
916.0519				2 (3.15 A)	90°	•	1

POWER FRAME Power strip – Large | Power input: 0.2m cable and GST18 plug

916.0703	1	1		1 (3.15 A)	35°/35°/90°	•	1
----------	---	---	--	------------	-------------	---	---





Power strip is clicked into place in the mounting frame from underneath **without tools.**



 **POWER FRAME Mounting frame – Small** | Width: 241 mm

317.000	Silver-grey, similar to RAL9006
317.001	Stainless steel
915.000	Black, similar to RAL9005
915.001	White, similar to RAL9010

POWER FRAME Mounting frame – Medium | Width: 284 mm

317.006	Silver-grey, similar to RAL9006
915.004	Black, similar to RAL9005
915.005	White, similar to RAL9010

POWER FRAME Mounting frame – Large | Width: 369 mm

317.007	Silver-grey, similar to RAL9006
915.006	Black, similar to RAL9005
915.003	White, similar to RAL9010






KAPSA

KAPSA's classic, reduced lines make it a power strip that is both design-orientated and space-saving – designed for the kitchen, office and many other areas.

The cover – which can be flipped open and interchanged – provides protection against external influences and is available in several versions. Three-way, modular equipment options, thereby allowing flexible configuration. Installation from above guarantees simple mounting – also optionally available as a retrofitted solution. A low installation depth of approx. 45 mm and a solid design characterise KAPSA and confirm the well-worn saying: less is more.

BENEFITS

- **Easily interchangeable cover available in various versions**
- **Simple installation from above**
- **Three-way, modular equipment options**
- **Just 45 mm installation depth**
- **Aluminium cover with high-quality feel**











Dimensions (W x H x D)
204 x 71 x 51 mm

Cover
material: Aluminium
Socket material:
Plastic, aluminium

Socket colour
Black

Colour variants



#							
KAPSA power strips – Medium Power input: 0.2m cable and GST18 plug							
927.051	2				35°	•	
927.054		2			35°	•	
927.060			2 (T13)		0°	•	
927.057				1 (3.15 A)	90°	•	1
927.052	2				35°		1
927.055		2			35°		1
927.061			2 (T13)		0°		1
927.058				2 (3.15 A)	90°		1



Cover can be
interchanged and easily
retrofitted.



#							
---	--	--	--	--	--	--	--

KAPSA power strips – Medium

Power input: 2.0m cable with end sleeves and mounting plug

927.000	3				35°		
927.003		3			35°		
927.006				3 (13 A)	90°		
927.009			3 (T13)		0°		
927.001	2				35°	•	
927.004		2			35°	•	
927.010			2 (T13)		0°	•	
927.002	2				35°		1
927.005		2			35°		1
927.008				2 (13 A)	90°		1
927.011			2 (T13)		0°		1



927.003



927.001



927.005



927.101



927.103



KAPSA cover – Medium

927.100	Stainless steel look
927.101	Painted in black, similar to RAL9005
927.102	Painted in white, similar to RAL9010
927.103	Anodised silver-grey, E6/EV1

Only power strips with **evenly flush custom modules** can be used in conjunction with the KAPSA.



CONI DUO

CONI DUO is ideal for narrow conference and training desks and tables. CONI DUO provides simple and unimpeded access to power, media and data connections on the table or desk from two sides. There is no reduction in leg room under the desk or table.

When not in use, CONI DUO integrates fully into the surface of the desk or table. Cables can be very easily routed through the opening: this is also possible when it is closed thanks to the black brush insert.

BENEFITS

- **Access from two opposite sides**
- **Just one desk or table cut-out needed**
- **Integrated into the top of the desk or table**
- **Minimal installation depth, robust frame design**
- **Integrated brush insert for closing once cables have been plugged in**



Dimensions (W x H x D)
782 x 151 x 58 mm

Mounting frame
material: Sheet steel
Socket material:
Plastic, aluminium

Socket colour
Black

Colour variants



#							
CONI power strips – Small Power input: 0.2m cable and GST18 plug							
912.003	2					35°	1
912.010		2				35°	1
912.015			3 (T13)			0°	1
912.045				2 (3.15 A)		90°	1
912.0167	1					35°	• 1
912.0171		1				35°	• 1
912.0991			1 (T13)			0°	• 1
912.1781				1 (3.15 A)		90°	• 1



912.003



912.0167

Access from
two **opposite**
sides.



CONI DUO mounting frame – 2x small

911.026 Silver-grey, similar to RAL9006

911.028 White, similar to RAL9010





CONI

CONI brings flexibility to the desktop, for example in conference and training rooms. CONI facilitates unrestricted individual access to power, media and data on the tabletop or desktop.

Minimal installation depth means that CONI provides ample leg room under the desk or table, even where the units are fitted near the edge. A wide range of standard surface finishes also provides the freedom to design.

BENEFITS

- **Integrated into the top of the desk or table**
- **Minimal installation depth, robust frame design**
- **Integrated brush insert for closing once cables have been plugged in**
- **Power strip can be interchanged quickly**
- **Suitable for retrofitting**



Dimensions (W x H x D)
248 x 151 x 58 mm

Mounting frame
material: Sheet steel
Socket material:
Plastic, aluminium

Socket colour
Black

Colour variants



#								
---	--	--	--	--	--	--	--	--

CONI power strips – Small | Power input: 0.2m cable and GST18 plug

912.003	2				35°			1
912.010		2			35°			1
912.015			3 (T13)		0°			1
912.045				2 (3.15 A)	90°			1
912.0167	1				35°		•	1
912.0171		1			35°		•	1
912.0991			1 (T13)		0°		•	1
912.1781				1 (3.15 A)	90°		•	1



**Integrated
brush insert**
for closing once
cables have
been plugged in.



912.003



912.0167

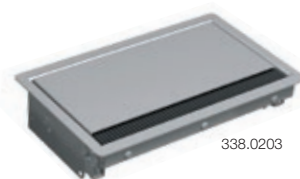


CONI mounting frame – Small

338.0203 Silver-grey, similar to RAL9006

911.000 White, similar to RAL9010

911.002 Black, similar to RAL9005



338.0203



911.002



DESK 2

DESK 2 is a multiple-socket outlet that can be equipped with various communication modules. It has been designed for flexible use in the office, meeting rooms, home offices or desk-sharing environments.


The multiple-socket outlet is made from aluminium and is available in various colours. The connections are screwed onto the standardised module windows and can be easily changed over.

BENEFITS

- **Design solution for modern workstations**
- **User-focused 35° orientation**
- **No hole required in the top of the table or desk**
- **Covered wiring to the edge of a desk or table**
- **Custom versions for future-proofing**

AWARDS





Dimensions (WxHxD)
See table x 86 x 100 mm

Profile
material: Aluminium
Socket material: Plastic

Socket colour
Black

Colour variants

#									
White Power input: 0.2m cable and GST18 plug Incl. mounting bracket									
902.319	2					35°	•		198mm
902.3670		2				35°	•		198mm
902.3120			2 (T13)			90°	•		240mm
902.3350				2 (3.15 A)		90°	•		240mm
902.228	2					35°	•	1	242mm
902.232		2				35°	•	1	242mm
902.249			2 (T13)			0°	•	1	261mm
902.231				2 (3.15 A)		90°	•	1	285mm
902.2820	1	1		1 (3.15 A)		35°/35°/90°	•	1	346mm




 A real head-
 turner thanks to
 its **high-quality**
design.



Stainless steel | Power input: 0.2m cable and GST18 plug | Incl. mounting bracket

902.545	2				35°	•		198mm
902.5430		2			35°	•		198mm
902.591			2 (T13)		90°	•		240mm
902.5280				2 (3.15 A)	90°	•		240mm
902.428	2				35°	•	1	242mm
902.432		2			35°	•	1	242mm
902.469			2 (T13)		90°	•	1	261mm
902.431				2 (3.15 A)	90°	•	1	285mm
902.494	1	1		1 (3.15 A)	35°/35°/90°	•	1	346mm



902.228



902.231



DESK 2 cable guide | Covered cable guide to the underside of the table or desk surface | Plastic

918.106	Painted white
918.107	Painted stainless steel



918.106

DESK 2 adhesive base

918.110	2x adhesive base set Plastic Painted white 2x TESA POWER STRIP®
918.111	2x adhesive base set Plastic Painted stainless steel 2x TESA POWER STRIP®



918.110

918.111



DESK 1

DESK is the ideal solution for data, media and power management wherever workstations need to be flexible. Typical situations might include meeting rooms, home offices or desk-sharing environments.

The modular construction of DESK enables it to be factory-configured with exactly the communications and power connections required for specific workstations and applications.

For the power supply, there is therefore a free choice of either the flexible Wieland connector system or permanent connections. The data connections are fitted with adapters as standard, but can likewise also be fixed connections.

BENEFITS

- Flexibility of use regardless of location
- With Wieland connector system or fixed cable connections
- Fixed or free-standing on desk/table
- Custom versions for future-proofing



Dimensions (W x H x D)
See table x 73 x 93 mm

Profile
material: Aluminium
Socket material: Plastic

Socket colour
Black

Colour variants



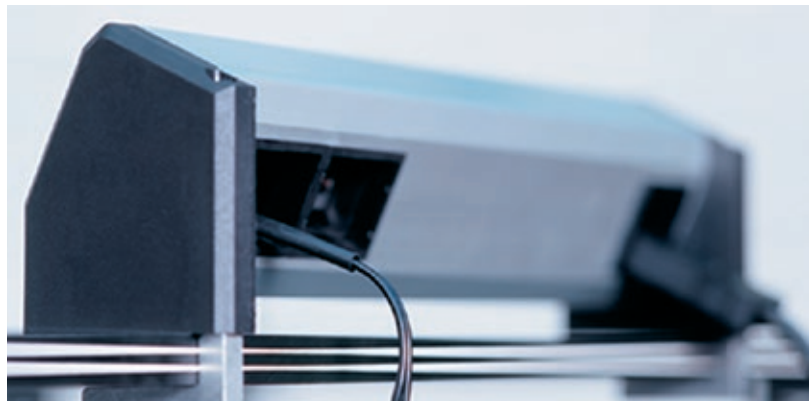
#								
---	--	--	--	--	--	--	--	--

Anodised aluminium profile | Power input/output: GST18

902.0192	2				35°	•		239 mm
902.068		2			35°	•		239 mm
902.1992			2 (T13)		0°	•		239 mm
902.166				2 (3.15 A)	45°	•		274 mm
902.0182	2				35°	•	1	282 mm
902.0185		2			35°	•	1	282 mm
902.0578			2 (T13)		0°	•	1	277 mm
902.0184				2 (3.15 A)	45°	•	1	317 mm
902.0740	1	1		1 (3.15 A)	35°/35°/90°	•	1	365 mm



Individual equipment
entirely according
to your wishes.



902.0182



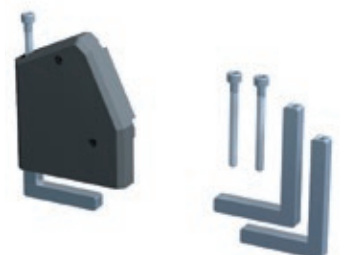
902.0184



DESK 1 mounting bracket | For desktop thickness of up to 50 mm

930.120

Anodised aluminium profile | Material thickness approx. 9 mm
Contents: 2 x mounting clamps, 2 x Allen bolts M5 x 60 mm



HDBaseT receiver



HDMI cable
(max. 5 m)



HDBaseT
(min. CAT5e,
CAT6 or CAT7
– max. 70 m)

HDMI cable
(max. 5 m)



← OR →

HDBaseT transmitter



Connection cable
(DisplayPort,
HDMI, VGA + audio,
signal switching)

Custom modules

DisplayPort digital



HDMI digital



VGA analogue



HD BASE T

Share information from up to four devices (laptops) at the touch of a button.

The buttons are already integrated into the relevant custom modules. The signals from the changeover switch to the display or projector are either transferred via HDBaseT or as original HDMI signals.

BENEFITS

- **Zero-loss transmission of image and sound signals via CAT cable up to 70 metres**
- **Simple cabling**
- **Plug & play**
- **No programming needed**
- **Resolution up to UHD (4K) possible**

HDBaseT switch

HDBaseT transmitter – with 3 inputs

903.211
Input: 2x HDMI, 1x VGA + audio
Output: HDMI + HDBaseT via RJ45
Max. 70 metre cable length
Incl. control box

HDBaseT transmitter – with 4 inputs

903.212
Input: 2x HDMI, 1x VGA + audio, 1x DisplayPort
Output: HDMI + HDBaseT via RJ45
Max. 70 metre cable length
Incl. control box

HDBaseT receiver

903.201
Input: HDBaseT via RJ45
Output: HDMI, HDCP compatible

Custom modules for integration into our desk connection panels

VGA, analogue | Miniature jack and button

903.204
1x VGA 15-pin socket/plug
1x 3.5mm miniature jack, socket/plug
1x blue illuminated button with RJ12 plug
Cable lengths 1 m

DisplayPort, digital | Button

903.206
1x DisplayPort socket/plug
1x blue illuminated button with RJ12 plug
Cable lengths 1 m

HDMI, digital | Button

903.205
1x HDMI socket/plug
1x blue illuminated button with RJ12 plug
Cable lengths 1 m



Mounting bracket

903.203 | Mounting bracket for HDBaseT transmitter | x 2

VGA cabling, analogue

VGA combi cable, 15-pin HD with miniature jack | Black | VGA plug 15 HD | 3.5 mm miniature jack plug

918.066 | Length 1 m

DisplayPort cabling, digital

DisplayPort connection cable | Black | 4K x 2K | DisplayPort plug

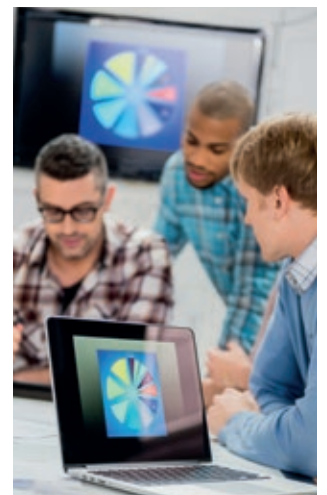
918.0951 | Length 1 m

HDMI cabling, digital | HDMI connection cable | Black | 4K x 2K | HDMI plug, 19-pin

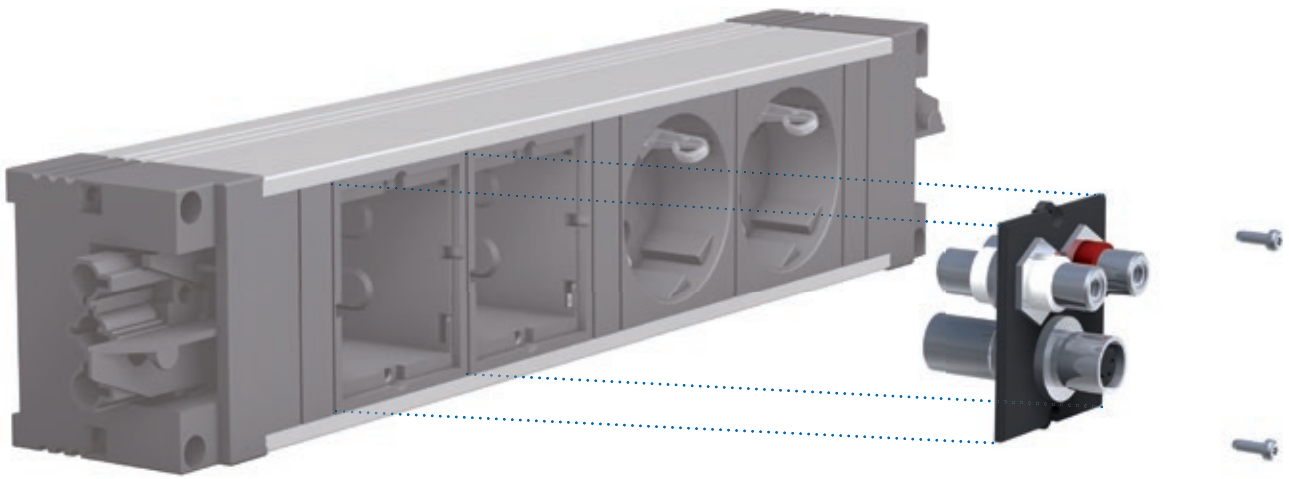
918.0191 | Length 1 m

918.0192 | Length 3 m

918.0193 | Length 5 m



More accessories are available in our catalogues and on request.



CUSTOM MODULES

Custom modules are the central components of video, audio and network connections. Their construction offers you simple and flexible installation in all areas.

With the easy-to-swap modules, you can create units to meet the individual data, video and audio connection requirements of your customers quickly and simply.

BENEFITS

- **Customisation of workstations**
- **Easily interchangeable**
- **High flexibility**



917.000



917.001



Custom module

Module that is screwed into an empty slot on a power strip.



Keystone module

Module that is inserted into a custom module using a keystone mount.

#



Custom module – 2x keystone mount

917.000 Module, black, accepts 2 data sockets with keystone fitting
Suitable for the data sockets listed below


Custom module – 1x keystone mount

917.001 Module, black, accepts 1 data socket with keystone fitting
Suitable for the data sockets listed below


Custom module – VGA, jack, HDMI

917.222 Breakout cables 0.2 m, socket-socket, for VGA, audio (3.5 mm stereo jack)
HDMI mounting using a keystone clip




 Data, video and audio connections
entirely according to your wishes.




Further custom modules can be found in our catalogues and on request.

#	K
940.083	Keystone module CAT6 coupler/socket/socket Front: RJ45 (keystone fixing) Rear: RJ45 (keystone fixing) Shielded
918.041	Keystone module 1 x HDMI 2.0 Front: HDMI socket Rear: HDMI, without cable Transmission possible up to a resolution of 3840x216 (UHD/4K) Approx. 85mm required installation depth
917.120	Keystone module USB 3.0 A/A (straight-through) Front: USB socket A Rear: USB socket A Fits into keystone frame 917.000 or 917.001 Requires approx. 85mm installation depth
917.157	Keystone module 1 x 3.5mm miniature jack Front: 3.5mm stereo miniature jack socket Rear: 3.5mm stereo miniature jack socket with approx. 0.2m cable Requires approx. 65mm installation depth






WIRELESS CHARGER

The WIRELESS CHARGER allows all Qi-capable mobile devices to be charged. No plugs, no irritating cables – the smartphone or tablet is simply and conveniently placed onto the charging module to charge.

The WIRELESS CHARGER can be very easily and quickly integrated into a wide range of table surfaces. The WIRELESS CHARGER is placed into a cut-out 79 mm in diameter and secured from below in the table surface using clamping claws.

BENEFITS

- **Wireless charging station**
- **For installation in desktops and tabletops**
- **With USB charger included**

Charge a smartphone **without cables.**

#	
934.000	Wireless Charger Black plastic housing Power input 1.5m cable with USB A connection Charging standard: WPC1.1 Input: 5 V Output: 5 V Charging distance: 4-6 mm For a 79 mm standard hole



POWER SUPPLY CABLES

Cables fitted with Wieland GST18 plug-in connectors are available to connect Facility products to the mains power supply. The benefits of these cables and their connectors, which are used all over the world, are flexibility in terms of length, the possibility of interchanging them should length requirements change, and availability for a variety of countries. Even extending the power supply to other power strips presents no problem and can usually be done without tools.



#	
---	--

GST18 earthing contact

Colour: Black | Cable: H05VV-F 3G 1.5mm² | End 1: Right-angled earthing contact plug | End 2: Wieland GST18 socket

375.075	Length 2.0m
375.003	Length 3.0m
375.007	Length 5.0m



375.075

CH/Switzerland plug

Colour: Black | Cable: H05VV-F 3G 1.5mm² | End 1: CH/Switzerland plug | End 2: Wieland GST18 socket

375.016	Length 1.5m
375.017	Length 3.0m
375.018	Length 5.0m



375.016

UK 13 SA plug

Colour: Black | Cable: H05VV-F 3G 1.5mm² | End 1: UK 13 A plug | End 2: Wieland GST18 socket

375.068	Length 2.0m
375.069	Length 3.0m
375.0048	Length 5.0m



375.068

SERVICE



www.bachmann.com

**BACH
MANN**
It's electric.



Download our
full catalogue
for free on our
website.



Bachmann GmbH
Ernstaldenstr. 33
70565 Stuttgart | Germany



+49 711 86602-0



+49 711 86602-34

ABOUT US

1947

The year BACHMANN was founded

More than 700

employees

Over 2.000

standard products from four market segments

20

different design awards

25

trading partners worldwide

BACHMANN makes connections

IT POWER

- 19" multiple-socket outlets
- Connector strips
- IT power supply
- Distributors
- BlueNet

FACILITY

- Connector panels
- Multiple-socket outlets
- Data cables
- Audio and video cables
- Power cables
- Cable management
- Network and media technology
- Radio and Wi-Fi solutions
- Custom Modules

INSTALLATION

- Tradesman's strips
- Multiple-socket outlets
- Power cables
- Distributors
- Adapters
- Plugs/couplers
- Electrotechnical accessories
- Lamps

KITCHEN

- Connector panels
- Multiple-socket outlets
- Data cables
- Power cables
- Distributors



 **Bachmann GmbH**
Ernstthaldenstr. 33
70565 Stuttgart | Germany

 +49 711 86602-0

 +49 711 86602-34

 www.bachmann.com

Pictograms and their meaning



Article number



Socket orientation



Socket outlet with earthing contact



Dual USB charger



UTE socket



Custom module



Swiss socket



Keystone module



UK socket



Width of the product



European socket



Accessories/extras

Further information



Custom module

Module that is screwed into an empty slot on a power strip.



Keystone module

Module that is inserted into a custom module using a keystone mount.



All power strips feature increased protection against contact.



For reasons related to the production process, there may be very minor deviations from the specified dimensions. We thank you for your understanding in this matter.